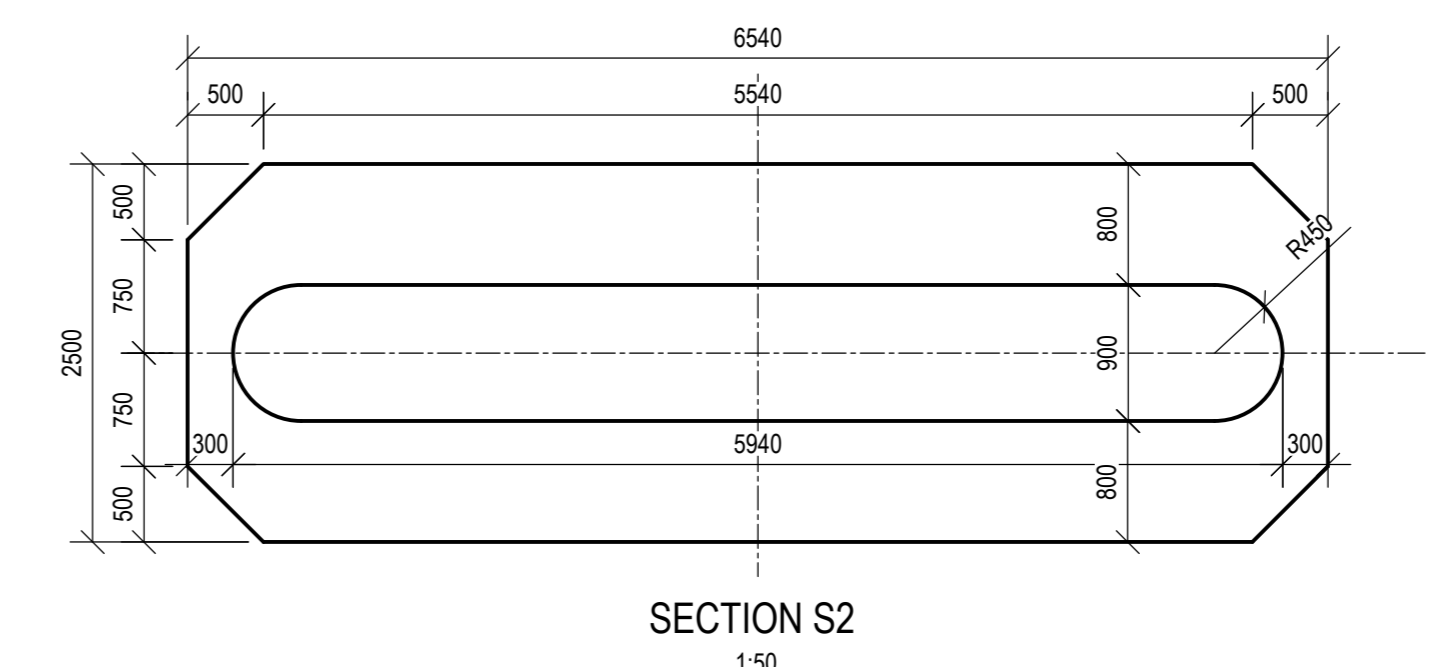
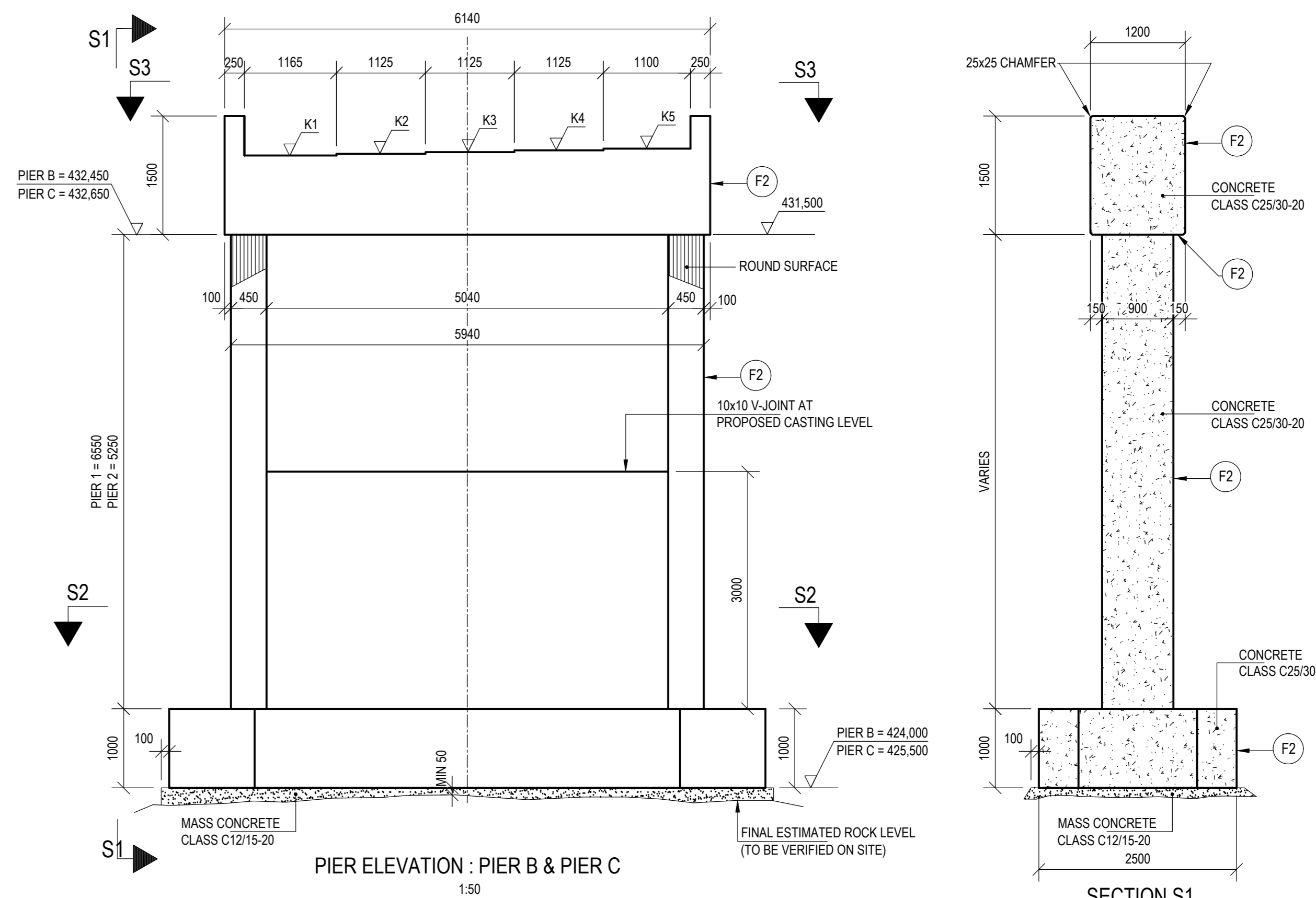
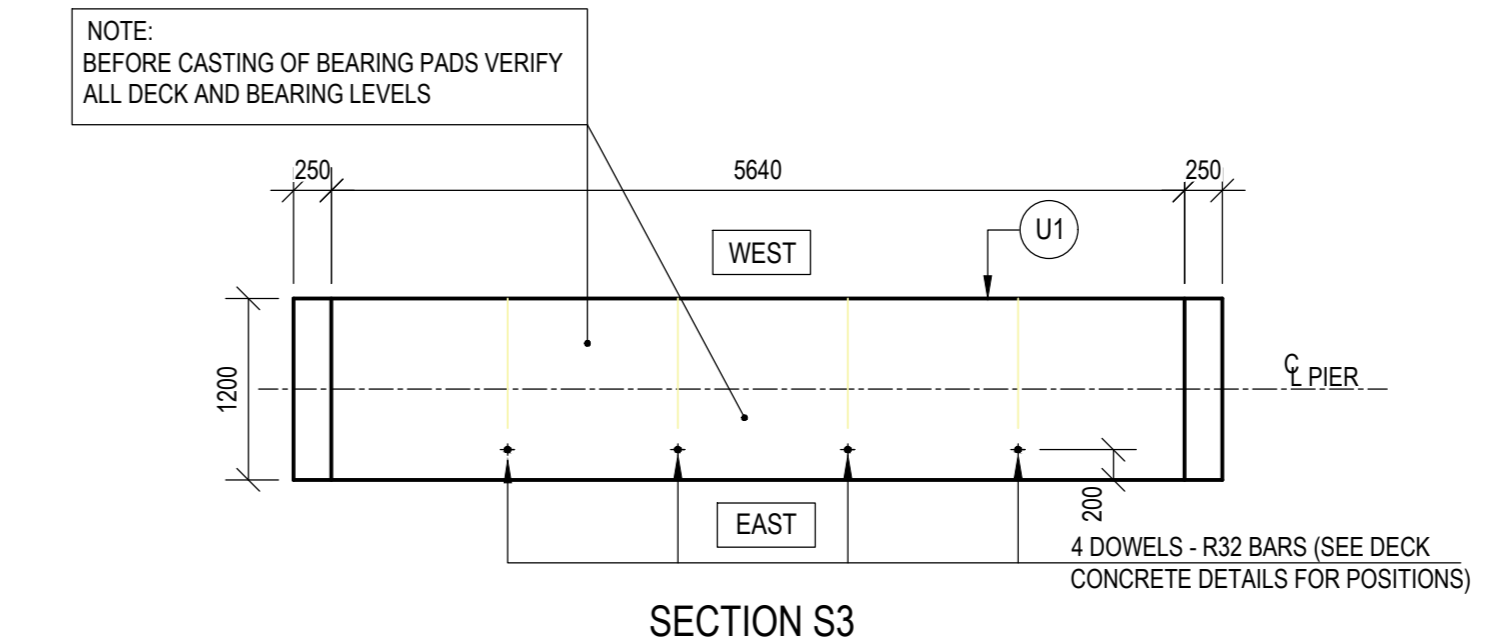
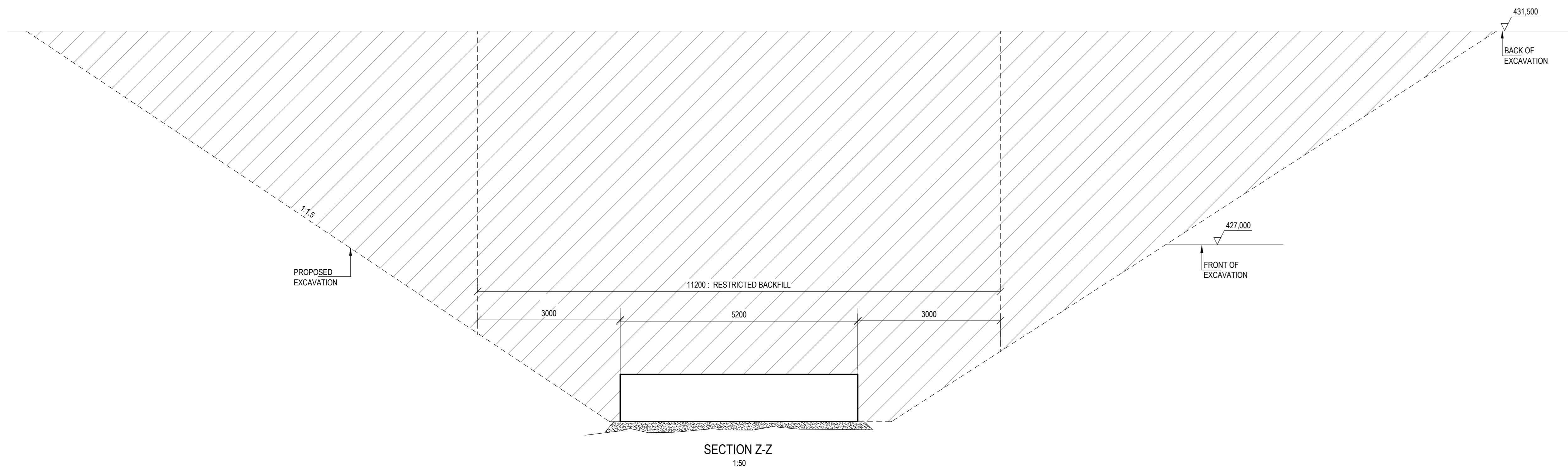


LEVELS EASTERN SIDE					
POSITION	K1	K2	K3	K4	K5
PIER B	432 545	432 567	432 589	432 611	432 633
PIER C	432 725	432 747	432 769	432 791	432 813

NOTE: LEVELS WESTERN SIDE 16mm LOWER



FOUNDATION INVESTIGATION:
 - FOR ABUTMENT A AND D PERCUSSION DRILLING WAS EXECUTED AND RESULTED IN EXPECTED FOUNDATION LEVELS OF HARD ROCK (>1MPa).
 - AFTER OPENING OF FOOTINGS INSPECTION OF ROCK CONDITION MUST BE DONE AND IF NEEDED FOUNDATION LEVELS MIGHT BE ADOPTED.

SETTING OUT DETAIL:
 - THE INFORMATION ON THE ROAD DRAWINGS MUST BE USED TO SET OUT CENTRELINE OF ROAD AND BRIDGE.
 - BEACON INFORMATION ON ROAD DESIGN DRAWINGS.

No.	Date	Revision	Initial
01	AUG 24	FOR TENDER	LH



South African
NATIONAL PARKS
TECHNICAL SERVICES

Project
SHANGONI - ROAD PROJECT

Client
KRUGER NATIONAL PARK

Drawing
BRIDGE B1 FOUNDATION PLAN AND PIER DETAILS

Scale: AS SHOWN Drawn: D VENTERL. HEPKEMA

Checked: A. NYAMBI Date: MAY 2020

Drawing No. Rev.
KNP-B1-02 01

This drawing and design is copyright and must not be reproduced in part or in whole without prior written consent. Contractors must verify all dimensions on site before commencing work or preparing shop drawings.